

GIM HOBELMAN ONE DESIGN REGATTA

September 13 and 14, 2008

Organizing Authority

THE CHICAGO CORINTHIAN YACHT CLUB

Chicago, Illinois

Hosted by

RHODES 19 FLEET 12

SAILING INSTRUCTIONS

1 RULES

The regatta will be governed by the rules as defined in The Racing Rules of Sailing as well as the respective one-design class rules.

2 NOTICES TO COMPETITORS

Notices to competitors shall be posted on the official notice board located on the North wall of the club's main assembly area.

3 CHANGES IN SAILING INSTRUCTIONS

Any change in the sailing instructions will be posted before 0930 hours on the day it will take effect, except that any change in the schedule of races will be posted by 1800 hours on the day before it will take effect.

4 SIGNALS MADE ASHORE

4.1 Signals made ashore shall be displayed upon the flagstaff facing the waterfront of the clubhouse.

4.2 When flag AP is displayed ashore, '1 minute' is replaced with 'not less than 45 minutes' in the race signal AP.

5 SCHEDULE OF RACES

Racing Circle	Classes
A	Laser, Vanguard 15
B	International 110s, Rhodes 19, Shields, Lightning

5.1 The scheduled time of the warning signal for the first race on Saturday is 11:00 and on Sunday is 10:30. Subsequent races follow.

5.2 A warning signal will not be made after 1530 on Saturday or after 1400 on Sunday.

6 CLASS FLAGS

Class flags shall be the class insignia, except for the following classes, which will use numbers 1 through 4:

Shields: 1,

RACING AREA

Racing shall take place upon the open waters of Lake Michigan approximately one mile east of the Montrose Harbor, with the dinghy circle between Montrose Harbor

and Belmont Harbor. There will be two separate racing areas. Final assignment of classes to the racing areas as well as starting sequence will be posted by 0930 on the first day of racing.

7 □□ THE COURSES

- 7.1 The diagrams in Attachment A – Courses – show the courses, including the order in which marks are to be passed, and the side on which each mark is to be passed.
- 7.2 For WL (windward-leeward) courses, there will be two windward marks with one being placed to windward of the other. The assignment of classes to the short or long course will be posted by 0930 on the first day of racing.
- 7.3 For the dinghy circle, if windy conditions, a triangle course will be run. See Attachment B. Otherwise, the length will be 0.35 to 0.4 miles for the windward leg on the dinghy circle.
- 7.4 No later than the warning signal, the race committee signal boat will display the course, approximate compass bearing of the first leg and approximate distance to the first mark for both long and short courses.

8 □□ MARKS

- 8.1 The Starting mark will be a yellow inflatable tetrahedron.
- 8.2 Marks 1, 2, and 3 will be orange inflatable tetrahedrons.
- 8.3 The Finishing mark will be a white inflatable tetrahedron when finishing to leeward.
- 8.4 The Finishing mark will be the windward mark when finishing to windward.
- 8.5 New marks, as provided in instruction 11, will be yellow inflatable tetrahedrons.
- 8.6 The dinghy circle will use orange balls for their marks.

9 □□ THE START

The starting line shall be between an orange flag on the race committee boat at the starboard end of the line and the port-end starting mark.

10 □ CHANGE OF THE NEXT LEG OF THE COURSE

To change the next leg of the course, the race committee will lay a new mark (or move the finishing line) and remove the original mark as soon as practicable. When in a subsequent change a new mark is replaced, it will be replaced by an original mark.

11 □ THE FINISH

11.1 Windward Finishes

The finishing line will be between a staff displaying an orange flag on the race committee boat and the finishing mark located to the race committee's port side.

A mark set boat in position at a Finishing line need not display a blue flag.

11.2 Leeward Finishes

The finishing line will be between a staff displaying an orange flag on the race committee boat and the finishing mark located on the race committee's starboard side.

12 □ TIME LIMIT

Boats failing to finish within 20 minutes after the first boat in their class sails the

course and finishes will be scored DNF without a hearing. This changes RRS 35 and A4.

13 □ PROTESTS AND REQUESTS FOR REDRESS

- 13.1** Protest forms are available from the race committee. A protest shall be delivered to the race committee within the protest time limit.
- 13.2** The protest time limit is 90 minutes after the last boat has finished the last race of the day on the circle of the protesting boat (this changes RRS 61.3 and 62.2).
- 13.3** The protest committee will attempt to hear protests in the order of receipt. Parties to a protest shall remain on call in the vicinity.

14 □ SCORING

- 14.1** One race is required to be completed to constitute a series.
- 14.2** The Low Point System of Appendix A is amended as follows:
 - (a) When fewer than 5 races have been completed, a boat's series score will be the total of her race scores.
 - (b) When from 5 or more races have been completed, a boat's series score will be the total of her race scores excluding her worst score.

15 □ SAFETY REGULATIONS

- 15.1** A boat retiring from a race or leaving the racing area before the end of the day's scheduled races shall notify the race committee or auxiliary race committee as soon as possible.
- 15.2** Check-in afloat

Each boat shall sail astern of the race committee boat, hail her number and be acknowledged to assure being recorded as a starter. This shall be done at least one minute prior to the first warning on each day of racing. A boat failing to check-in may be penalized for that race equal to 20% of the number of competitors registered in her class.
- 15.3** Check-in ashore

All boats shall check-in upon returning to the harbor within one hour of the official docking time of the race committee boat. A check-in sheet shall be posted at the race committee office. A boat failing to check-in within the time limit may be penalized for that race equal to 20% of the number of competitors registered in her class.

16 □ RADIO COMMUNICATION

- 16.1** A boat shall neither make radio transmissions while racing nor receive radio communications not available to all boats. This restriction also applies to mobile telephones.
- 16.2** The race committee will monitor and may make courtesy broadcasts on channel 72 VHF. A boat may use this channel to notify the race committee of their withdrawal or need for assistance.

17 □ PRIZES

Places awarded: 1st, 2nd and 3rd.

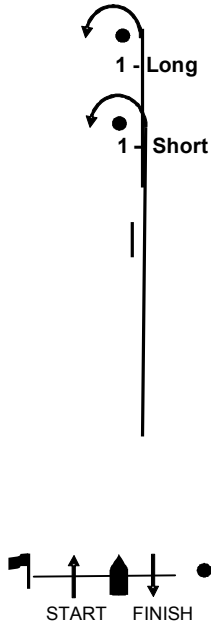
18 □ DISCLAIMER OF LIABILITY

Competitors participate in the regatta entirely at their own risk. See RRS 4, Decision to race. The organizing authority will not accept any liability for material damage or personal injury or death sustained in conjunction with or prior to, during, or after the regatta.

Attachment A - Courses

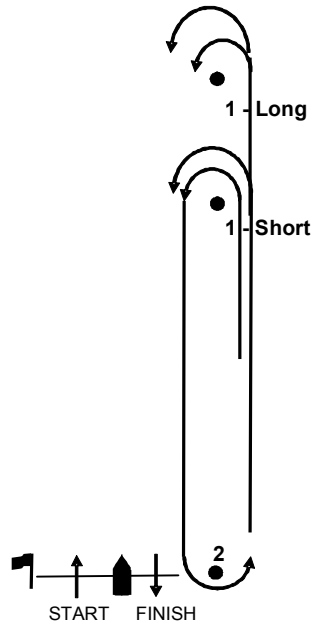
WL 2

Start, 1, Finish



WL 4

Start, 1, 2, 1, Finish



Attachment B – Triangle Course
Start, 1, 3, 2, 1, Finish

